

# LIFESPAN™

COMPOSITE ARCHITECTURAL BEAMS



## HYBRID ARCHITECTURAL SYSTEM



**EVA-LAST®**  
INSPIRED BY NATURE, DESIGNED FOR LIFE.

[www.eva-last.com](http://www.eva-last.com)

500 years ago roughly 60% of the Earth was covered in forests. Now, there is less than 10% of our rainforests left.

Forests are being destroyed for their precious timber for use as building products. Today with modern technology we are now able to create products that accurately resemble wood and can even out perform wood with regard to weather resistance. Eva-Last® has always been aware of this issue and sees an opportunity to create forest friendly alternatives to timber that would help to diminish the demand for tropical hardwoods.

Lifespan™ is highly versatile and offers long lasting and eco-friendly alternatives for pergolas, cladding, screening, railing and other decorative architectural showpieces.

### BAMBOO COMPOSITE BEAMS WITH PURPOSE

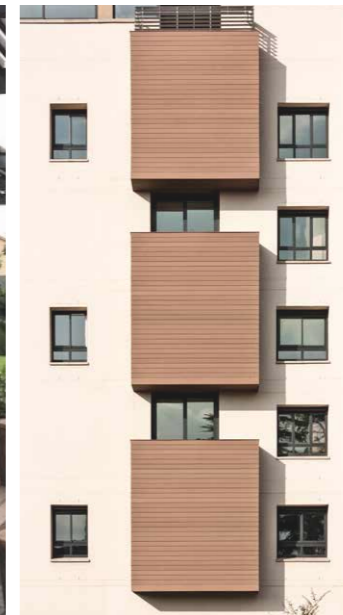
Lifespan™ beams add style and functionality in a diverse range of applications. Enjoy the shade and privacy of a pergola or screen, or enhance the appeal of your home exterior with beams that give the look of wood without the maintenance hassles. The versatility of Lifespan™ decorative architectural beams is matched only by its beauty.



PERGOLAS



PRIVACY SCREENS



CLADDING & SOFFITS



DECORATIVE ARCHITECTURE



## Why choose Lifespan™

Lifespan™ architectural beams offer design versatility and unrivaled span thanks to their specialised aluminium core that makes for easier installation at height. The outer coating of low-maintenance bamboo composite resists biodegradation, corrosion, insects, and harsh weather, and offers built-in UV protection for beautiful durability. Enjoy the look of timber beams without the upkeep.

Extruded aluminium profiles make up the structural skeleton of the Lifespan™ beams. The subsequent co-extrusion of a layer of Eva-tech™ composite with an adhesive furnishes these beams with a protective and natural aesthetic finish.



### DESIGN VERSATILITY

Architectural beams offer a diverse range of aesthetic applications



### LIGHTWEIGHT DESIGN

Specialised aluminium core for easier installation at height



### LOW-MAINTENANCE

The look of timber beams without the upkeep



### INCREASED SPAN

Reinforced bamboo composite beam with built-in aluminium core



### DECAY & WEATHER RESISTANT

Resists biodegradation, corrosion, insects, & harsh weather



### FADE RESISTANT

Built-in UV protection for beautiful durability



### GO GREEN

It is vital for us all to protect our natural resources, we must make an effort and work to develop alternative options to timber in the building and architectural landscape.



**LIFESPAN™**  
COMPOSITE ARCHITECTURAL BEAMS

## UNPRECEDENTED SPAN

The Lifespan™ aluminum skeleton significantly enhances dimensional and flexural stability. A modified co-polymer adhesive incorporated in a tri-extrusion process ensures robust bonds between the different elements. The cap, our engineered composite, is available in Eva-tech® surface technology and completes the system providing an aesthetic finish, resistant to severe climatic and biodeterioration conditions.

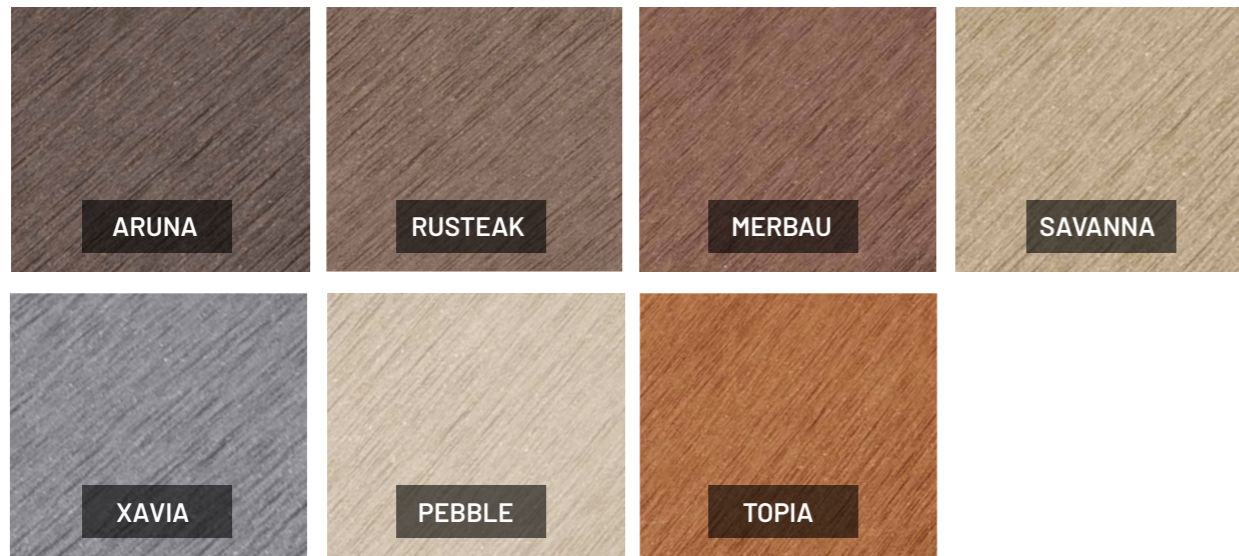
- 1 Aluminium core
- 2 Engineered flexible adhesive
- 3 Outer protective composite coating (Eva-tech® surface technology)



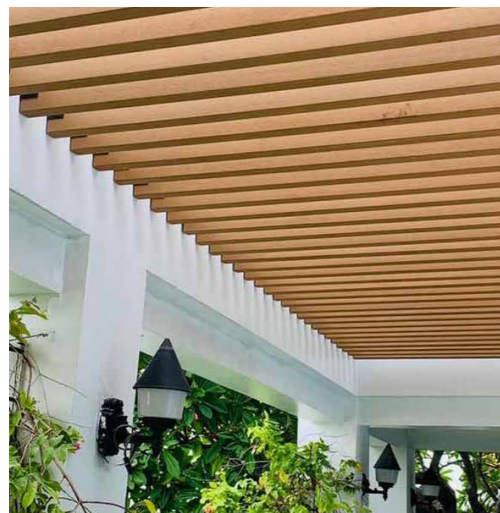
**Eva-tech**®



10 year warranty against scratching, fading and biodeterioration.

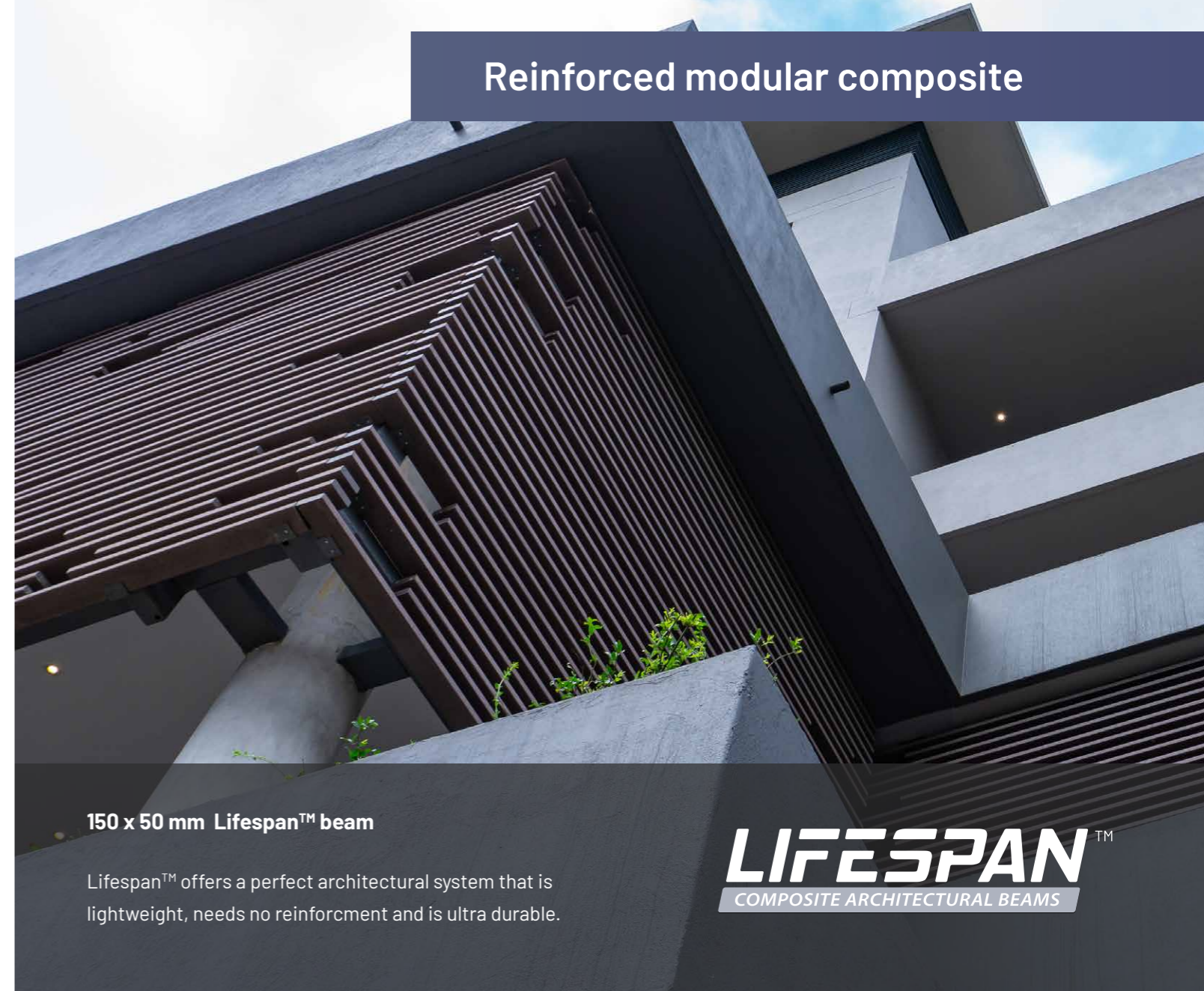


Lifespan™ has been designed to meet industrial norms, however, building codes and standards may differ between jurisdiction or countries, be sure to consult your local building codes when using Lifespan™.



	<b>Dimensions:</b> 100 x 30 mm (5,800 mm lengths) <b>Weight:</b> 1.31 kg/m
	<b>Dimensions:</b> 150 x 50 mm (5,800 mm lengths) <b>Weight:</b> 3.30 kg/m
	<b>Dimensions:</b> 50 x 30 mm (5,800 mm lengths) <b>Weight:</b> 0.79 kg/m
	<b>Dimensions:</b> 97 x 97 mm (5,800 mm lengths) <b>Weight:</b> 4.63 kg/m

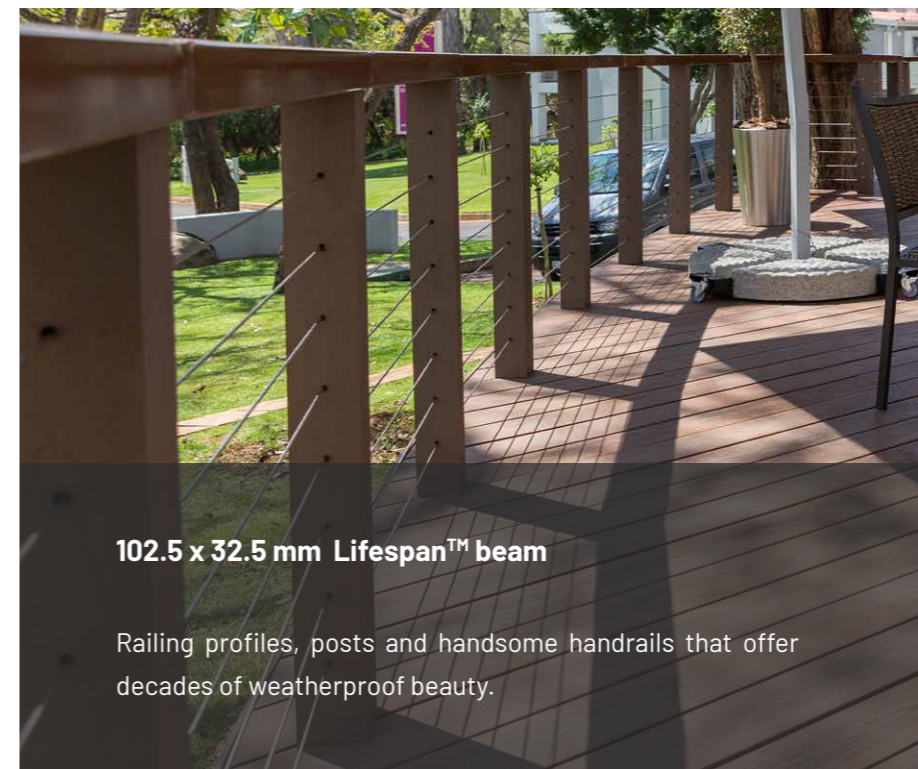
## Reinforced modular composite



### 150 x 50 mm Lifespan™ beam

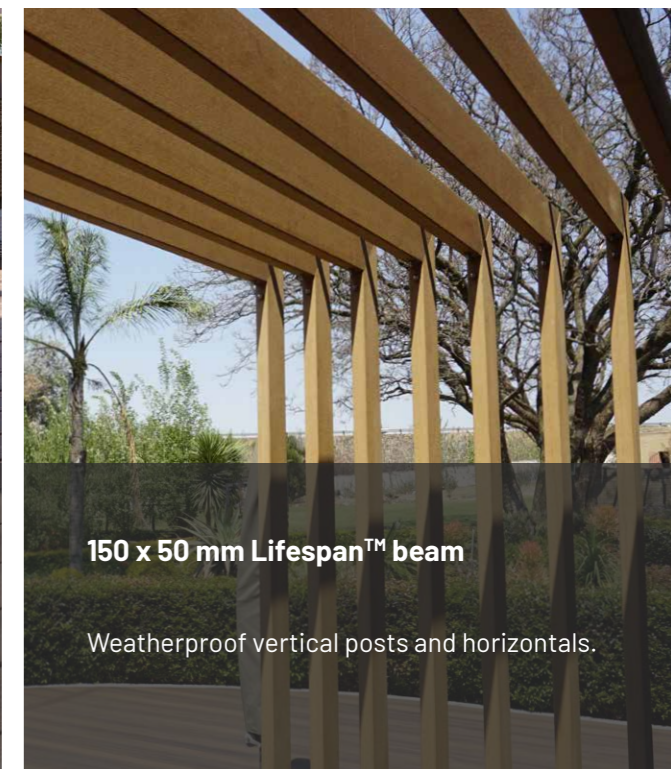
Lifespan™ offers a perfect architectural system that is lightweight, needs no reinforcement and is ultra durable.

**LIFESPAN**™  
COMPOSITE ARCHITECTURAL BEAMS



### 102.5 x 32.5 mm Lifespan™ beam

Railing profiles, posts and handsome handrails that offer decades of weatherproof beauty.



### 150 x 50 mm Lifespan™ beam

Weatherproof vertical posts and horizontals.

## SOUTH AFRICA OFFICE

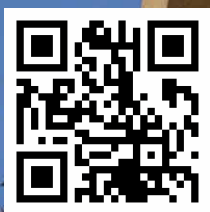
Tel: +27 (0) 10 593 9222

Address: Plot 84 Short Street

Rietfontein, Muldersdrift

Johannesburg 1747

South Africa



**LIFESPAN**™  
COMPOSITE ARCHITECTURAL BEAMS

FIND US ON



For more information visit [www.eva-last.com](http://www.eva-last.com)

Email: [info@eva-last.com](mailto:info@eva-last.com)  
[www.eva-last.com](http://www.eva-last.com)

A PRODUCT BY

**EVA-LAST**®  
INSPIRED BY NATURE, DESIGNED FOR LIFE.